



# GreenSpace linear accent

## RS386B S10 P20 935 PSU-E MB BK

Polycarbonate cover and gloss high-reflective optic -

GreenSpace Linear accent is a comprehensive product offer with multiple modules available. By means of its modular design, it offers flexible lumen output for different indoor applications, such as office, retail and hospitality. This family provides both surface mounted and recessed installations with high CRI90 and 3 different beam angles to perfectly fit the light requirement of the indoor applications. Dali and 1-10V control interfaces give the way for future system connections as well.

### Product data

| General information                      |   | Controls and dimming                |                          |
|--|---|-------------------------------------|--------------------------|
| Light source color                       | 935 warm white                                      | Dimmable                            | No                       |
| Optical cover/lens type                  | Polycarbonate cover and gloss high-reflective optic |                                     |                          |
| Control interface                        | -   |                                     |                          |
| Protection class IEC                     | Safety class II                                     |                                     |                          |
| CE mark                                  | -   |                                     |                          |
| Number of products on MCB of 16 A type B | 25  |                                     |                          |
| Light source engine type                 | LED   |                                     |                          |
| Operating and electrical                 |   | Mechanical and housing              |                          |
| Input Voltage                            | 220 to 240 V  | Housing Material                    | Aluminum Alloy           |
| Input Frequency                          | 50 or 60 Hz   | Optical cover/lens material         | Polycarbonate            |
| Power Factor (Min)                       | 0.9   | Optical cover/lens finish           | Matte                    |
|  |   | Color                               | Black and white          |
|  |   | Approval and application            |                          |
|  |   | Ingress protection code             | IP20 [ Finger-protected] |
|  |   | Mech. impact protection code        | IK02 [ 0.2 J standard]   |
|  |   | Initial performance (IEC compliant) |                          |
|  |   | Initial luminous flux (system flux) | 1150 lm                  |
|  |   | Luminous flux tolerance             | +/-10%                   |

## GreenSpace linear accent

|                                |         |
|--------------------------------|---------|
| Initial LED luminaire efficacy | 65 lm/W |
| Init. Corr. Color Temperature  | 3500 K  |
| Init. Color Rendering Index    | >90     |
| Initial input power            | 18 W    |
| Power consumption tolerance    | +/-10%  |

### Application conditions

|                           |               |
|---------------------------|---------------|
| Ambient temperature range | -20 to +40 °C |
|---------------------------|---------------|

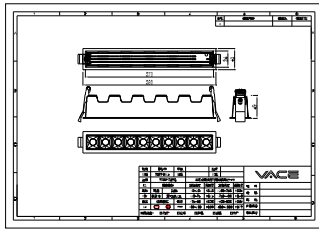
### Product data

|                    |                                |
|--------------------|--------------------------------|
| Order product name | RS386B S10 P20 935 PSU-E MB BK |
|--------------------|--------------------------------|

|                                 |              |
|---------------------------------|--------------|
| Order code                      | 911401512702 |
| Numerator - Quantity Per Pack   | 1            |
| Numerator - Packs per outer box | 10           |
| Material Nr. (12NC)             | 911401512702 |
| Copy Net Weight (Piece)         | 0.450 kg     |



## Dimensional drawing



RS386B S10 P20 935 PSU-E MB BK

