



GreenSpace linear accent

RS386B S10 P20 935 PSU-E MB WH

Polycarbonate cover and gloss high-reflective optic -

GreenSpace Linear accent is a comprehensive product offer with multiple modules available. By means of its modular design, it offers flexible lumen output for different indoor applications, such as office, retail and hospitality. This family provides both surface mounted and recessed installations with high CRI90 and 3 different beam angles to perfectly fit the light requirement of the indoor applications. Dali and 1-10V control interfaces give the way for future system connections as well.

Product data

General information		Controls and dimming	
Light source color	935 warm white	Dimmable	No
Optical cover/lens type	Polycarbonate cover and gloss high-reflective optic		
Control interface	-		
Protection class IEC	Safety class II		
CE mark	-		
Number of products on MCB of 16 A type B	25		
Light source engine type	LED		
Operating and electrical		Mechanical and housing	
Input Voltage	220 to 240 V	Housing Material	Aluminum Alloy
Input Frequency	50 or 60 Hz	Optical cover/lens material	Polycarbonate
Power Factor (Min)	0.9	Optical cover/lens finish	Matte
		Color	Black and white
		Approval and application	
		Ingress protection code	IP20 [Finger-protected]
		Mech. impact protection code	IK02 [0.2 J standard]
		Initial performance (IEC compliant)	
		Initial luminous flux (system flux)	1150 lm
		Luminous flux tolerance	+/-10%

GreenSpace linear accent

Initial LED luminaire efficacy	65 lm/W
Init. Corr. Color Temperature	3500 K
Init. Color Rendering Index	>90
Initial input power	18 W
Power consumption tolerance	+/-10%

Application conditions

Ambient temperature range	-20 to +40 °C
---------------------------	---------------

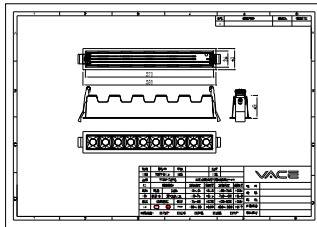
Product data

Order product name	RS386B S10 P20 935 PSU-E MB WH
--------------------	--------------------------------

Order code	911401512002
Numerator - Quantity Per Pack	1
Numerator - Packs per outer box	10
Material Nr. (12NC)	911401512002
Copy Net Weight (Piece)	0.450 kg



Dimensional drawing



RS386B S10 P20 935 PSU-E MB WH

