



GreenSpace linear accent

RS386B S5 P10 930 PSD-E WB WH

Polycarbonate cover and gloss high-reflective optic -

GreenSpace Linear accent is a comprehensive product offer with multiple modules available. By means of its modular design, it offers flexible lumen output for different indoor applications, such as office, retail and hospitality. This family provides both surface mounted and recessed installations with high CRI90 and 3 different beam angles to perfectly fit the light requirement of the indoor applications. Dali and 1-10V control interfaces give the way for future system connections as well.

Product data

General information	
Light source color	930 warm white
Optical cover/lens type	Polycarbonate cover and gloss high-reflective optic
Control interface	DALI
Protection class IEC	Safety class II
CE mark	-
Number of products on MCB of 16 A type B	71
Light source engine type	LED
Operating and electrical	
Input Voltage	220 to 240 V
Input Frequency	50 or 60 Hz
Power Factor (Min)	0.9

Controls and dimming	
Dimmable	Yes
Mechanical and housing	
Housing Material	Aluminum Alloy
Optical cover/lens material	Polycarbonate
Optical cover/lens finish	Matte
Color	Black and white
Approval and application	
Ingress protection code	IP20 [Finger-protected]
Mech. impact protection code	IK02 [0.2 J standard]
Initial performance (IEC compliant)	
Initial luminous flux (system flux)	575 lm
Luminous flux tolerance	+/-10%

GreenSpace linear accent

Initial LED luminaire efficacy	64 lm/W
Init. Corr. Color Temperature	3000 K
Init. Color Rendering Index	>90
Initial input power	10 W
Power consumption tolerance	+/-10%

Application conditions

Ambient temperature range	-20 to +40 °C
---------------------------	---------------

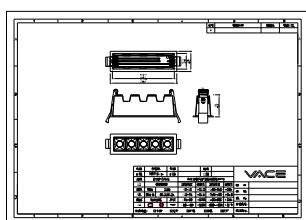
Product data

Order product name	RS386B S5 P10 930 PSD-E WB WH
--------------------	-------------------------------

Order code	911401521602
Numerator - Quantity Per Pack	1
Numerator - Packs per outer box	18
Material Nr. (12NC)	911401521602
Copy Net Weight (Piece)	0.290 kg



Dimensional drawing



RS386B S5 P10 930 PSD-E WB WH

