



GreenSpace linear accent

SM386C S10 P20 935 PSD WB BK

Polycarbonate cover and gloss high-reflective optic -

GreenSpace Linear accent is a comprehensive product offer with multiple modules available. By means of its modular design, it offers flexible lumen output for different indoor applications, such as office, retail and hospitality. This family provides both surface mounted and recessed installations with high CRI90 and 3 different beam angles to perfectly fit the light requirement of the indoor applications. Dali and 1-10V control interfaces give the way for future system connections as well.

Product data

General information		Controls and dimming	
Light source color	935 warm white	Dimmable	Yes
Optical cover/lens type	Polycarbonate cover and gloss high-reflective optic	Mechanical and housing	
Control interface	DALI	Housing Material	Aluminum Alloy
Protection class IEC	Safety class II	Optical cover/lens material	Polycarbonate
CE mark	-	Optical cover/lens finish	Matte
Number of products on MCB of 16 A type B	53	Color	Black and white
Light source engine type	LED	Approval and application	
Operating and electrical		Ingress protection code	IP20 [Finger-protected]
Input Voltage	220 to 240 V	Mech. impact protection code	IK02 [0.2 J standard]
Input Frequency	50 or 60 Hz	Initial performance (IEC compliant)	
Power Factor (Min)	0.9	Initial luminous flux (system flux)	1150 lm
		Luminous flux tolerance	+/-10%

GreenSpace linear accent

Initial LED luminaire efficacy	65 lm/W
Init. Corr. Color Temperature	3500 K
Init. Color Rendering Index	>90
Initial input power	18 W
Power consumption tolerance	+/-10%

Application conditions

Ambient temperature range	-20 to +40 °C
---------------------------	---------------

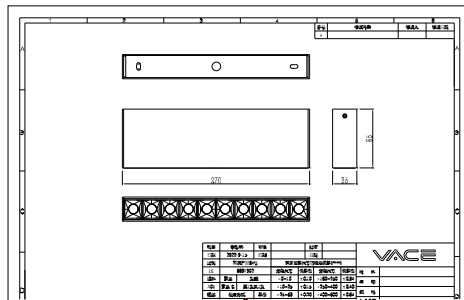
Product data

Order product name	SM386C S10 P20 935 PSD WB BK
--------------------	------------------------------

Order code	911401526802
Numerator - Quantity Per Pack	1
Numerator - Packs per outer box	10
Material Nr. (12NC)	911401526802
Copy Net Weight (Piece)	0.520 kg



Dimensional drawing



SM386C S10 P20 935 PSD WB BK

