



UniFlood M G2

BVP353 12LED RGB 220V L15 45 DMX

UniFlood M G2 - 1010 lm - 24 W - -

Philips UniFlood M gen2 is a cost-effective, exterior-rated architectural LED floodlight that's designed for façade, landscape and outdoor flood lighting applications. The robust, modular, rectangular design features highly-efficient optics, making it ideal for illuminating everything from multi-storey façades and bridges to landmarks and monuments. This LED floodlight is available in white, monochromatic colors, RGB, RGBW and tunable white. It comes with six different spread lenses ranging from narrow spot to wide flood and has DMX512/RDM control option. A truly modular floodlight that gives architects and designers the freedom to explore a wide range of concepts and designs with no limitations.

Warnings and Safety

- For outdoor use only.

Product data

| General information | |
|-------------------------|--|
| Light source color | RGB |
| Driver included | Yes |
| Optical cover/lens type | Clear glass |
| Control interface | Dynamic DMX/RDM |
| Connection | Flying leads/wires and 2 Push-in connector 4-pole |
| Cable | Cable 0.5 m without plug 3-pole and 2 Cables 0.5 m with connector 4-pole |
| Protection class IEC | Safety class I |
| Flammability mark | For mounting on normally flammable surfaces |
| CE mark | CE mark |

| Operating and electrical | |
|-----------------------------|-------------------|
| Input Voltage | 220 to 240 V |
| Input Frequency | 50 to 60 Hz |
| Power Factor (Min) | 0.8 |
| Controls and dimming | |
| Dimmable | Yes |
| Mechanical and housing | |
| Housing Material | Aluminum extruded |
| Optical cover/lens material | Acrylate |
| Overall length | 155 mm |
| Overall width | 140 mm |

UniFlood M G2

| | |
|-------------------------------------|-----------------------|
| Overall height | 149 mm |
| Effective projected area | 0.0256 m ² |
| Color | Dark gray |
| Dimensions (Height x Width x Depth) | 149 x 140 x 155 mm |

Approval and application

| | |
|------------------------------|---|
| Ingress protection code | IP66 [Dust penetration-protected, jet-proof] |
| Mech. impact protection code | IK06 [1 J] |

Initial performance (IEC compliant)

| | |
|-------------------------------------|---------|
| Initial luminous flux (system flux) | 1010 lm |
| Luminous flux tolerance | +/-10% |
| Initial LED luminaire efficacy | 42 lm/W |
| Init. Corr. Color Temperature | - |
| Init. Color Rendering Index | >80 |
| Initial input power | 24 W |
| Power consumption tolerance | +/-10% |

Application conditions

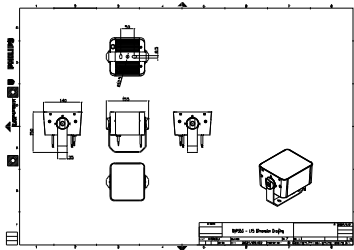
| | |
|---------------------------|---------------|
| Ambient temperature range | -40 to +50 °C |
|---------------------------|---------------|

Product data

| | |
|---------------------------------|----------------------------------|
| Full product code | 871951492496399 |
| Order product name | BVP353 12LED RGB 220V L15 45 DMX |
| EAN/UPC - Product | 8719514924963 |
| Order code | 911401745753 |
| Numerator - Quantity Per Pack | 1 |
| Numerator - Packs per outer box | 8 |
| Material Nr. (12NC) | 911401745753 |
| Net Weight (Piece) | 1.875 kg |



Dimensional drawing



BVP353 12LED RGB 220V L15 45 DMX

