



UniFlood M G2

BVP353 16LED 30K 220V L18 45

UniFlood M G2 - 3020 lm - 30 W - 3000 K

Philips UniFlood M gen2 is a cost-effective, exterior-rated architectural LED floodlight that's designed for façade, landscape and outdoor flood lighting applications. The robust, modular, rectangular design features highly-efficient optics, making it ideal for illuminating everything from multi-storey façades and bridges to landmarks and monuments. This LED floodlight is available in white, monochromatic colors, RGB, RGBW and tunable white. It comes with six different spread lenses ranging from narrow spot to wide flood and has DMX512/RDM control option. A truly modular floodlight that gives architects and designers the freedom to explore a wide range of concepts and designs with no limitations.

Warnings and Safety

- For outdoor use only.

Product data

General information	
Light source color	830 warm white
Driver included	Yes
Optical cover/lens type	Clear glass
Control interface	-
Connection	Flying leads/wires
Cable	Cable without plug 3-pole
Protection class IEC	Safety class I
Flammability mark	For mounting on normally flammable surfaces
CE mark	CE mark
Operating and electrical	
Input Voltage	220 to 240 V

Input Frequency	50 to 60 Hz
Power Factor (Min)	0.8
Controls and dimming	
Dimmable	No
Mechanical and housing	
Housing Material	Aluminum extruded
Optical cover/lens material	Acrylate
Overall length	183 mm
Overall width	140 mm
Overall height	149 mm
Effective projected area	0.029 m ²

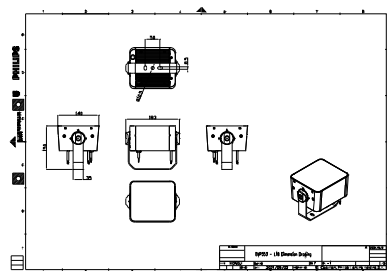
UniFlood M G2

Color	Dark gray
Dimensions (Height x Width x Depth)	149 x 140 x 183 mm
Approval and application	
Ingress protection code	IP66 [Dust penetration-protected, jet-proof]
Mech. impact protection code	IK06 [1 J]
Initial performance (IEC compliant)	
Initial luminous flux (system flux)	3020 lm
Luminous flux tolerance	+/-10%
Initial LED luminaire efficacy	101 lm/W
Init. Corr. Color Temperature	3000 K
Init. Color Rendering Index	>80
Initial chromaticity	4 SDCM
Initial input power	30 W
Power consumption tolerance	+/-10%

Application conditions	
Ambient temperature range	-40 to +50 °C
Product data	
Full product code	871951492527499
Order product name	BVP353 16LED 30K 220V L18 45
EAN/UPC - Product	8719514925274
Order code	911401746063
Numerator - Quantity Per Pack	1
Numerator - Packs per outer box	8
Material Nr. (12NC)	911401746063
Net Weight (Piece)	2.188 kg



Dimensional drawing



BVP353 16LED 30K 220V L18 45

