



# UniFlood M G2

**BVP353 18LED 40K 220V L21 30**

UniFlood M G2 - 3600 lm - 40 W - 4000 K

Philips UniFlood M gen2 is a cost-effective, exterior-rated architectural LED floodlight that's designed for façade, landscape and outdoor flood lighting applications. The robust, modular, rectangular design features highly-efficient optics, making it ideal for illuminating everything from multi-storey façades and bridges to landmarks and monuments. This LED floodlight is available in white, monochromatic colors, RGB, RGBW and tunable white. It comes with six different spread lenses ranging from narrow spot to wide flood and has DMX512/RDM control option. A truly modular floodlight that gives architects and designers the freedom to explore a wide range of concepts and designs with no limitations.

## Warnings and Safety

- For outdoor use only.

## Product data

General information	
Light source color	840 neutral white
Driver included	Yes
Optical cover/lens type	Clear glass
Control interface	-
Connection	Flying leads/wires
Cable	Cable without plug 3-pole
Protection class IEC	Safety class I
Flammability mark	For mounting on normally flammable surfaces
CE mark	CE mark
Operating and electrical	
Input Voltage	220 to 240 V

Input Frequency	50 to 60 Hz
Power Factor (Min)	0.85
Controls and dimming	
Dimmable	No
Mechanical and housing	
Housing Material	Aluminum extruded
Optical cover/lens material	Acrylate
Overall length	210 mm
Overall width	140 mm
Overall height	149 mm
Effective projected area	0.034 m <sup>2</sup>

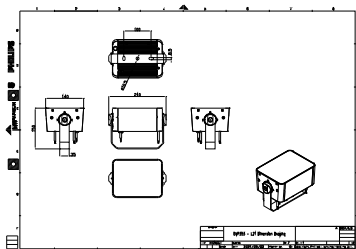
## UniFlood M G2

Color	Dark gray
Dimensions (Height x Width x Depth)	149 x 140 x 210 mm
<b>Approval and application</b>	
Ingress protection code	IP66 [ Dust penetration-protected, jet-proof]
Mech. impact protection code	IK06 [ 1 J]
<b>Initial performance (IEC compliant)</b>	
Initial luminous flux (system flux)	3600 lm
Luminous flux tolerance	+/-10%
Initial LED luminaire efficacy	90 lm/W
Init. Corr. Color Temperature	4000 K
Init. Color Rendering Index	>80
Initial chromaticity	4 SDCM
Initial input power	40 W
Power consumption tolerance	+/-10%

<b>Application conditions</b>	
Ambient temperature range	-40 to +50 °C
<b>Product data</b>	
Full product code	871951492555799
Order product name	BVP353 18LED 40K 220V L21 30
EAN/UPC - Product	8719514925557
Order code	911401746343
Numerator - Quantity Per Pack	1
Numerator - Packs per outer box	8
Material Nr. (12NC)	911401746343
Net Weight (Piece)	2.600 kg



## Dimensional drawing



BVP353 18LED 40K 220V L21 30

