



UniFlood M G2

BVP353 24LED RGBNW 220V L24 15 DMX

UniFlood M G2 - 2575 lm - 50 W - -

Philips UniFlood M gen2 is a cost-effective, exterior-rated architectural LED floodlight that's designed for façade, landscape and outdoor flood lighting applications. The robust, modular, rectangular design features highly-efficient optics, making it ideal for illuminating everything from multi-storey façades and bridges to landmarks and monuments. This LED floodlight is available in white, monochromatic colors, RGB, RGBW and tunable white. It comes with six different spread lenses ranging from narrow spot to wide flood and has DMX512/RDM control option. A truly modular floodlight that gives architects and designers the freedom to explore a wide range of concepts and designs with no limitations.

Warnings and Safety

- For outdoor use only.

Product data

General information	
Light source color	RGBW
Driver included	Yes
Optical cover/lens type	Clear glass
Control interface	Dynamic DMX/RDM
Connection	Flying leads/wires and 2 Push-in connector 4-pole
Cable	Cable 0.5 m without plug 3-pole and 2 Cables 0.5 m with connector 4-pole
Protection class IEC	Safety class I
Flammability mark	For mounting on normally flammable surfaces
CE mark	CE mark

Operating and electrical	
Input Voltage	220 to 240 V
Input Frequency	50 to 60 Hz
Power Factor (Min)	0.9
Controls and dimming	
Dimmable	Yes
Mechanical and housing	
Housing Material	Aluminum extruded
Optical cover/lens material	Acrylate
Overall length	238 mm
Overall width	140 mm

UniFlood M G2

Overall height	149 mm
Effective projected area	0.038 m ²
Color	Dark gray
Dimensions (Height x Width x Depth)	149 x 140 x 238 mm

Approval and application

Ingress protection code	IP66 [Dust penetration-protected, jet-proof]
Mech. impact protection code	IK06 [1 J]

Initial performance (IEC compliant)

Initial luminous flux (system flux)	2575 lm
Luminous flux tolerance	+/-10%
Initial LED luminaire efficacy	52 lm/W
Init. Corr. Color Temperature	-
Init. Color Rendering Index	>80
Initial input power	50 W
Power consumption tolerance	+/-10%

Application conditions

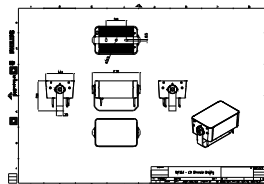
Ambient temperature range	-40 to +50 °C
---------------------------	---------------

Product data

Full product code	871951492588599
Order product name	BVP353 24LED RGBNW 220V L24 15 DMX
EAN/UPC - Product	8719514925885
Order code	911401746673
Numerator - Quantity Per Pack	1
Numerator - Packs per outer box	8
Material Nr. (12NC)	911401746673
Net Weight (Piece)	3.000 kg



Dimensional drawing



BVP353 24LED RGBNW 220V L24 15 DMX

