

UniFlood M G2

BVP353 60LED 27K 220V L50 45

UniFlood M G2 - 9605 lm - 120 W - 2700 K

Philips UniFlood M gen2 is a cost-effective, exterior-rated architectural LED floodlight that's designed for façade, landscape and outdoor flood lighting applications. The robust, modular, rectangular design features highly-efficient optics, making it ideal for illuminating everything from multi-storey façades and bridges to landmarks and monuments. This LED floodlight is available in white, monochromatic colors, RGB, RGBW and tunable white. It comes with six different spread lenses ranging from narrow spot to wide flood and has DMX512/RDM control option. A truly modular floodlight that gives architects and designers the freedom to explore a wide range of concepts and designs with no limitations.

Warnings and Safety

- For outdoor use only.

Product data

General information		Input Frequency	
Light source color	827 warm white	Input Frequency	50 to 60 Hz
Driver included	Yes	Power Factor (Min)	0.9
Optical cover/lens type	Clear glass	Controls and dimming	
Control interface	-	Dimmable	No
Connection	Flying leads/wires	Mechanical and housing	
Cable	Cable without plug 3-pole	Housing Material	Aluminum extruded
Protection class IEC	Safety class I	Optical cover/lens material	Acrylate
Flammability mark	For mounting on normally flammable surfaces	Overall length	486 mm
CE mark	CE mark	Overall width	140 mm
Operating and electrical		Overall height	149 mm
Input Voltage	220 to 240 V	Effective projected area	0.078 m ²

UniFlood M G2

Color	Dark gray
Dimensions (Height x Width x Depth)	149 x 140 x 486 mm
Approval and application	
Ingress protection code	IP66 [Dust penetration-protected, jet-proof]
Mech. impact protection code	IK06 [1 J]
Initial performance (IEC compliant)	
Initial luminous flux (system flux)	9605 lm
Luminous flux tolerance	+/-10%
Initial LED luminaire efficacy	80 lm/W
Init. Corr. Color Temperature	2700 K
Init. Color Rendering Index	>80
Initial chromaticity	4 SDCM
Initial input power	120 W
Power consumption tolerance	+/-10%

Application conditions

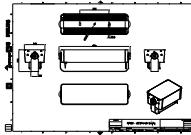
Ambient temperature range	-40 to +50 °C
---------------------------	---------------

Product data

Full product code	871951492742199
Order product name	BVP353 60LED 27K 220V L50 45
EAN/UPC - Product	8719514927421
Order code	911401748213
Numerator - Quantity Per Pack	1
Numerator - Packs per outer box	4
Material Nr. (12NC)	911401748213
Net Weight (Piece)	6.200 kg



Dimensional drawing



BVP353 60LED 27K 220V L50 45

