



UniFlood M G2

BVP353 60LED 30K 220V L50 30

UniFlood M G2 - 10380 lm - 120 W - 3000 K

Philips UniFlood M gen2 is a cost-effective, exterior-rated architectural LED floodlight that's designed for façade, landscape and outdoor flood lighting applications. The robust, modular, rectangular design features highly-efficient optics, making it ideal for illuminating everything from multi-storey façades and bridges to landmarks and monuments. This LED floodlight is available in white, monochromatic colors, RGB, RGBW and tunable white. It comes with six different spread lenses ranging from narrow spot to wide flood and has DMX512/RDM control option. A truly modular floodlight that gives architects and designers the freedom to explore a wide range of concepts and designs with no limitations.

Warnings and Safety

- For outdoor use only.

Product data

General information		Input Frequency		50 to 60 Hz
Light source color	830 warm white	Power Factor (Min)	0.9	
Driver included	Yes	Controls and dimming		
Optical cover/lens type	Clear glass	Dimmable	No	
Control interface	-	Mechanical and housing		
Connection	Flying leads/wires	Housing Material	Aluminum extruded	
Cable	Cable without plug 3-pole	Optical cover/lens material	Acrylate	
Protection class IEC	Safety class I	Overall length	486 mm	
Flammability mark	For mounting on normally flammable surfaces	Overall width	140 mm	
CE mark	CE mark	Overall height	149 mm	
Operating and electrical		Effective projected area	0.078 m ²	
Input Voltage	220 to 240 V			

UniFlood M G2

Color	Dark gray
Dimensions (Height x Width x Depth)	149 x 140 x 486 mm
Approval and application	
Ingress protection code	IP66 [Dust penetration-protected, jet-proof]
Mech. impact protection code	IK06 [1 J]
Initial performance (IEC compliant)	
Initial luminous flux (system flux)	10380 lm
Luminous flux tolerance	+/-10%
Initial LED luminaire efficacy	87 lm/W
Init. Corr. Color Temperature	3000 K
Init. Color Rendering Index	>80
Initial chromaticity	4 SDCM
Initial input power	120 W
Power consumption tolerance	+/-10%

Application conditions

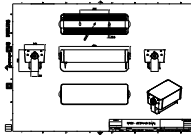
Ambient temperature range	-40 to +50 °C
---------------------------	---------------

Product data

Full product code	871951492734699
Order product name	BVP353 60LED 30K 220V L50 30
EAN/UPC - Product	8719514927346
Order code	911401748133
Numerator - Quantity Per Pack	1
Numerator - Packs per outer box	4
Material Nr. (12NC)	911401748133
Net Weight (Piece)	6.200 kg



Dimensional drawing



BVP353 60LED 30K 220V L50 30

