

UniFlood M G2

BVP353 72LED 30K 220V L57 15

UniFlood M G2 - 12465 lm - 150 W - 3000 K

Philips UniFlood M gen2 is a cost-effective, exterior-rated architectural LED floodlight that's designed for façade, landscape and outdoor flood lighting applications. The robust, modular, rectangular design features highly-efficient optics, making it ideal for illuminating everything from multi-storey façades and bridges to landmarks and monuments. ;This LED floodlight is available in white, monochromatic colors, RGB, RGBW and tunable white.It comes with six different spread lenses ranging from narrow spot to wide flood and has DMX512/RDM control option. A truly modular floodlight that gives architects and designers the freedom to explore a wide range of concepts and designs with no limitations.

Warnings and Safety

- For outdoor use only.

Product data

| General information | |
|--------------------------|---|
| Light source color | 830 warm white |
| Driver included | Yes |
| Optical cover/lens type | Clear glass |
| Control interface | - |
| Connection | Flying leads/wires |
| Cable | Cable without plug 3-pole |
| Protection class IEC | Safety class I |
| Flammability mark | For mounting on normally flammable surfaces |
| CE mark | CE mark |
| Operating and electrical | |
| Input Voltage | 220 to 240 V |

| Input Frequency | 50 to 60 Hz |
|-----------------------------|-------------------|
| Inrush current | 60 A |
| Power Factor (Min) | 0.95 |
| Controls and dimming | |
| Dimmable | No |
| Mechanical and housing | |
| Housing Material | Aluminum extruded |
| Optical cover/lens material | Acrylate |
| Overall length | 569 mm |
| Overall width | 140 mm |
| Overall height | 149 mm |

UniFlood M G2

| | |
|--------------------------|----------------------|
| Effective projected area | 0.078 m ² |
| Color | Dark gray |

Approval and application

| | |
|------------------------------|---|
| Ingress protection code | IP66 [Dust penetration-protected, jet-proof] |
| Mech. impact protection code | IK06 [1 J] |

Initial performance (IEC compliant)

| | |
|-------------------------------------|----------|
| Initial luminous flux (system flux) | 12465 lm |
| Luminous flux tolerance | +/-10% |
| Initial LED luminaire efficacy | 83 lm/W |
| Init. Corr. Color Temperature | 3000 K |
| Init. Color Rendering Index | >80 |
| Initial chromaticity | 4 SDCM |
| Initial input power | 150 W |
| Power consumption tolerance | +/-10% |

Application conditions

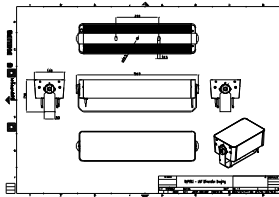
| | |
|---------------------------|---------------|
| Ambient temperature range | -40 to +50 °C |
|---------------------------|---------------|

Product data

| | |
|---------------------------------|------------------------------|
| Full product code | 871951492761299 |
| Order product name | BVP353 72LED 30K 220V L57 15 |
| EAN/UPC - Product | 8719514927612 |
| Order code | 911401748403 |
| Numerator - Quantity Per Pack | 1 |
| Numerator - Packs per outer box | 2 |
| Material Nr. (12NC) | 911401748403 |
| Net Weight (Piece) | 6.800 kg |



Dimensional drawing



BVP353 72LED 30K 220V L57 15

