

UniFlood M G2

BVP353 72LED 30K 220V L57 45

UniFlood M G2 - 12465 lm - 150 W - 3000 K

Philips UniFlood M gen2 is a cost-effective, exterior-rated architectural LED floodlight that's designed for façade, landscape and outdoor flood lighting applications. The robust, modular, rectangular design features highly-efficient optics, making it ideal for illuminating everything from multi-storey façades and bridges to landmarks and monuments. This LED floodlight is available in white, monochromatic colors, RGB, RGBW and tunable white. It comes with six different spread lenses ranging from narrow spot to wide flood and has DMX512/RDM control option. A truly modular floodlight that gives architects and designers the freedom to explore a wide range of concepts and designs with no limitations.

Warnings and Safety

- For outdoor use only.

Product data

General information		Input Frequency		50 to 60 Hz
Light source color	830 warm white	Inrush current	60 A	
Driver included	Yes	Power Factor (Min)	0.95	
Optical cover/lens type	Clear glass	Controls and dimming		
Control interface	-	Dimmable	No	
Connection	Flying leads/wires	Mechanical and housing		
Cable	Cable without plug 3-pole	Housing Material	Aluminum extruded	
Protection class IEC	Safety class I	Optical cover/lens material	Acrylate	
Flammability mark	For mounting on normally flammable surfaces	Overall length	569 mm	
CE mark	CE mark	Overall width	140 mm	
Operating and electrical		Overall height	149 mm	
Input Voltage	220 to 240 V			

UniFlood M G2

Effective projected area	0.078 m ²
Color	Dark gray
Dimensions (Height x Width x Depth)	149 x 140 x 569 mm

Approval and application

Ingress protection code	IP66 [Dust penetration-protected, jet-proof]
Mech. impact protection code	IK06 [1 J]

Initial performance (IEC compliant)

Initial luminous flux (system flux)	12465 lm
Luminous flux tolerance	+/-10%
Initial LED luminaire efficacy	83 lm/W
Init. Corr. Color Temperature	3000 K
Init. Color Rendering Index	>80
Initial chromaticity	4 SDCM
Initial input power	150 W
Power consumption tolerance	+/-10%

Application conditions

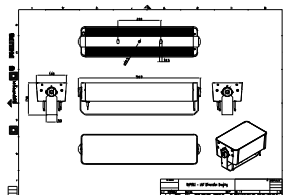
Ambient temperature range	-40 to +50 °C
---------------------------	---------------

Product data

Full product code	871951492779799
Order product name	BVP353 72LED 30K 220V L57 45
EAN/UPC - Product	8719514927797
Order code	911401748583
Numerator - Quantity Per Pack	1
Numerator - Packs per outer box	2
Material Nr. (12NC)	911401748583
Net Weight (Piece)	6.800 kg



Dimensional drawing



BVP353 72LED 30K 220V L57 45

