



UniFlood M G2

BVP354 144LED 27K 220V L57 30 DMX

UniFlood M G2 - 23585 lm - 300 W - 2700 K

Philips UniFlood M gen2 is a cost-effective, exterior-rated architectural LED floodlight that's designed for façade, landscape and outdoor flood lighting applications. The robust, modular, rectangular design features highly-efficient optics, making it ideal for illuminating everything from multi-storey façades and bridges to landmarks and monuments. This LED floodlight is available in white, monochromatic colors, RGB, RGBW and tunable white. It comes with six different spread lenses ranging from narrow spot to wide flood and has DMX512/RDM control option. A truly modular floodlight that gives architects and designers the freedom to explore a wide range of concepts and designs with no limitations.

Warnings and Safety

- For outdoor use only.

Product data

General information	
Light source color	827 warm white
Driver included	Yes
Optical cover/lens type	Clear glass
Control interface	Dynamic DMX/RDM
Connection	Flying leads/wires and 2 Push-in connector 4-pole
Cable	Cable 0.5 m without plug 3-pole and 2 Cables 0.5 m with connector 4-pole
Protection class IEC	Safety class I
Flammability mark	For mounting on normally flammable surfaces
CE mark	CE mark

Operating and electrical	
Input Voltage	220 to 240 V
Input Frequency	50 to 60 Hz
Inrush current	60 A
Power Factor (Min)	0.95
Controls and dimming	
Dimmable	Yes
Mechanical and housing	
Housing Material	Aluminum extruded
Optical cover/lens material	Acrylate
Overall length	569 mm

UniFlood M G2

Overall width	304 mm
Overall height	231 mm
Effective projected area	0.182 m ²
Color	Dark gray
Dimensions (Height x Width x Depth)	231 x 304 x 569 mm

Approval and application

Ingress protection code	IP66 [Dust penetration-protected, jet-proof]
Mech. impact protection code	IK06 [1 J]

Initial performance (IEC compliant)

Initial luminous flux (system flux)	23585 lm
Luminous flux tolerance	+/-10%
Initial LED luminaire efficacy	79 lm/W
Init. Corr. Color Temperature	2700 K
Init. Color Rendering Index	>80
Initial chromaticity	4 SDCM
Initial input power	300 W

Power consumption tolerance	+/-10%
-----------------------------	--------

Application conditions

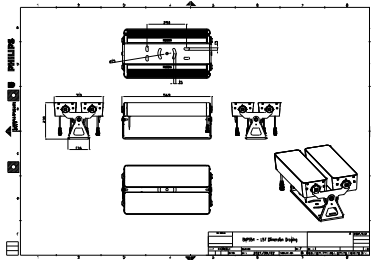
Ambient temperature range	-40 to +50 °C
---------------------------	---------------

Product data

Full product code	871951492880000
Order product name	BVP354 144LED 27K 220V L57 30 DMX
EAN/UPC - Product	8719514928800
Order code	911401749593
Numerator - Quantity Per Pack	1
Numerator - Packs per outer box	1
Material Nr. (12NC)	911401749593
Net Weight (Piece)	14.000 kg



Dimensional drawing



BVP354 144LED 27K 220V L57 30 DMX

