



# UniFlood M G2

**BVP354 144LED RGBNW 220V L57 45 DMX**

UniFlood M G2 - 15785 lm - 300 W - -

Philips UniFlood M gen2 is a cost-effective, exterior-rated architectural LED floodlight that's designed for façade, landscape and outdoor flood lighting applications. The robust, modular, rectangular design features highly-efficient optics, making it ideal for illuminating everything from multi-storey façades and bridges to landmarks and monuments. This LED floodlight is available in white, monochromatic colors, RGB, RGBW and tunable white. It comes with six different spread lenses ranging from narrow spot to wide flood and has DMX512/RDM control option. A truly modular floodlight that gives architects and designers the freedom to explore a wide range of concepts and designs with no limitations.

## Warnings and Safety

- For outdoor use only.

## Product data

General information		Operating and electrical	
Light source color	RGBW	Input Voltage	220 to 240 V
Driver included	Yes	Input Frequency	50 to 60 Hz
Optical cover/lens type	Clear glass	Inrush current	60 A
Control interface	Dynamic DMX/RDM	Power Factor (Min)	0.95
Connection	Flying leads/wires and 2 Push-in connector 4-pole	<b>Controls and dimming</b>	
Cable	Cable 0.5 m without plug 3-pole and 2 Cables 0.5 m with connector 4-pole	Dimmable	Yes
Protection class IEC	Safety class I	<b>Mechanical and housing</b>	
Flammability mark	For mounting on normally flammable surfaces	Housing Material	Aluminum extruded
CE mark	CE mark	Optical cover/lens material	Acrylate
		Overall length	569 mm

# UniFlood M G2

Overall width	304 mm
Overall height	231 mm
Effective projected area	0.182 m <sup>2</sup>
Color	Dark gray
Dimensions (Height x Width x Depth)	231 x 304 x 569 mm

## Approval and application

Ingress protection code	IP66 [ Dust penetration-protected, jet-proof]
Mech. impact protection code	IK06 [ 1 J]

## Initial performance (IEC compliant)

Initial luminous flux (system flux)	15785 lm
Luminous flux tolerance	+/-10%
Initial LED luminaire efficacy	53 lm/W
Init. Corr. Color Temperature	-
Init. Color Rendering Index	>80
Initial input power	300 W

Power consumption tolerance	+/-10%
-----------------------------	--------

## Application conditions

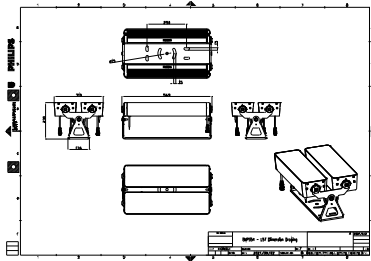
Ambient temperature range	-40 to +50 °C
---------------------------	---------------

## Product data

Full product code	871951492894700
Order product name	BVP354 144LED RGBNW 220V L57 45 DMX
EAN/UPC - Product	8719514928947
Order code	911401749733
Numerator - Quantity Per Pack	1
Numerator - Packs per outer box	1
Material Nr. (12NC)	911401749733
Net Weight (Piece)	14.000 kg



## Dimensional drawing



BVP354 144LED RGBNW 220V L57 45 DMX

