



UniFlood M G2

BVP355 180LED 30K 220V L50 30

UniFlood M G2 - 31140 lm - 360 W - 3000 K

Philips UniFlood M gen2 is a cost-effective, exterior-rated architectural LED floodlight that's designed for façade, landscape and outdoor flood lighting applications. The robust, modular, rectangular design features highly-efficient optics, making it ideal for illuminating everything from multi-storey façades and bridges to landmarks and monuments. This LED floodlight is available in white, monochromatic colors, RGB, RGBW and tunable white. It comes with six different spread lenses ranging from narrow spot to wide flood and has DMX512/RDM control option. A truly modular floodlight that gives architects and designers the freedom to explore a wide range of concepts and designs with no limitations.

Warnings and Safety

- For outdoor use only.

Product data

General information	
Light source color	830 warm white
Driver included	Yes
Optical cover/lens type	Clear glass
Control interface	-
Connection	Flying leads/wires
Cable	Cable without plug 3-pole
Protection class IEC	Safety class I
Flammability mark	For mounting on normally flammable surfaces
CE mark	CE mark
Operating and electrical	
Input Voltage	220 to 240 V

Input Frequency	50 to 60 Hz
Inrush current	60 A
Power Factor (Min)	0.9
Controls and dimming	
Dimmable	No
Mechanical and housing	
Housing Material	Aluminum extruded
Optical cover/lens material	Acrylate
Overall length	486 mm
Overall width	478 mm
Overall height	231 mm

UniFlood M G2

Effective projected area	0.234 m ²
Color	Dark gray
Dimensions (Height x Width x Depth)	231 x 478 x 486 mm

Approval and application

Ingress protection code	IP66 [Dust penetration-protected, jet-proof]
Mech. impact protection code	IK06 [1 J]

Initial performance (IEC compliant)

Initial luminous flux (system flux)	31140 lm
Luminous flux tolerance	+/-10%
Initial LED luminaire efficacy	87 lm/W
Init. Corr. Color Temperature	3000 K
Init. Color Rendering Index	>80
Initial chromaticity	4 SDCM
Initial input power	360 W
Power consumption tolerance	+/-10%

Application conditions

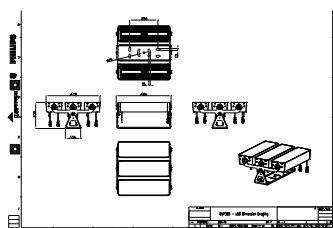
Ambient temperature range	-40 to +50 °C
---------------------------	---------------

Product data

Full product code	871951492950000
Order product name	BVP355 180LED 30K 220V L50 30
EAN/UPC - Product	8719514929500
Order code	911401750293
Numerator - Quantity Per Pack	1
Numerator - Packs per outer box	1
Material Nr. (12NC)	911401750293
Net Weight (Piece)	18.750 kg



Dimensional drawing



BVP355 180LED 30K 220V L50 30

