



# UniFlood M G2

**BVP355 216LED 30K 220V L57 30 DMX**

UniFlood M G2 - 36905 lm - 450 W - 3000 K

Philips UniFlood M gen2 is a cost-effective, exterior-rated architectural LED floodlight that's designed for façade, landscape and outdoor flood lighting applications. The robust, modular, rectangular design features highly-efficient optics, making it ideal for illuminating everything from multi-storey façades and bridges to landmarks and monuments. ;This LED floodlight is available in white, monochromatic colors, RGB, RGBW and tunable white.It comes with six different spread lenses ranging from narrow spot to wide flood and has DMX512/RDM control option. A truly modular floodlight that gives architects and designers the freedom to explore a wide range of concepts and designs with no limitations.

## Warnings and Safety

- For outdoor use only.

## Product data

| General information     |  |
|-------------------------|--|
| Light source color      | 830 warm white   |
| Driver included         | Yes  |
| Optical cover/lens type | Clear glass  |
| Control interface       | Dynamic DMX/RDM  |
| Connection              | Flying leads/wires and 2 Push-in connector 4-pole                        |
| Cable                   | Cable 0.5 m without plug 3-pole and 2 Cables 0.5 m with connector 4-pole |
| Protection class IEC    | Safety class I   |
| Flammability mark       | For mounting on normally flammable surfaces                              |
| CE mark                 | CE mark  |

| Operating and electrical    |                   |
|-----------------------------|-------------------|
| Input Voltage               | 220 to 240 V      |
| Input Frequency             | 50 to 60 Hz       |
| Inrush current              | 60 A              |
| Power Factor (Min)          | 0.95              |
| Controls and dimming        |                   |
| Dimmable                    | Yes               |
| Mechanical and housing      |                   |
| Housing Material            | Aluminum extruded |
| Optical cover/lens material | Acrylate          |
| Overall length              | 569 mm            |

## UniFlood M G2

|                          |                      |
|--------------------------|----------------------|
| Overall width            | 478 mm               |
| Overall height           | 231 mm               |
| Effective projected area | 0.273 m <sup>2</sup> |
| Color                    | Dark gray            |

### Approval and application

|                              |   |
|------------------------------|---|
| Ingress protection code      | IP66 [ Dust penetration-protected, jet-proof] |
| Mech. impact protection code | IK06 [ 1 J]                                   |

### Initial performance (IEC compliant)

|                                     |          |
|-------------------------------------|----------|
| Initial luminous flux (system flux) | 36905 lm |
| Luminous flux tolerance             | +/-10%   |
| Initial LED luminaire efficacy      | 82 lm/W  |
| Init. Corr. Color Temperature       | 3000 K   |
| Init. Color Rendering Index         | >80      |
| Initial chromaticity                | 4 SDCM   |
| Initial input power                 | 450 W    |

|                             |        |
|-----------------------------|--------|
| Power consumption tolerance | +/-10% |
|-----------------------------|--------|

### Application conditions

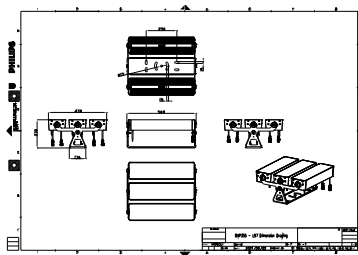
|                           |               |
|---------------------------|---------------|
| Ambient temperature range | -40 to +50 °C |
|---------------------------|---------------|

### Product data

|                                 |                                   |
|---------------------------------|-----------------------------------|
| Full product code               | 871951492917300                   |
| Order product name              | BVP355 216LED 30K 220V L57 30 DMX |
| EAN/UPC - Product               | 8719514929173                     |
| Order code                      | 911401749963                      |
| Numerator - Quantity Per Pack   | 1                                 |
| Numerator - Packs per outer box | 1                                 |
| Material Nr. (12NC)             | 911401749963                      |
| Net Weight (Piece)              | 20.750 kg                         |



## Dimensional drawing



BVP355 216LED 30K 220V L57 30 DMX

