



UniFlood C Pro

BVP372 16LED 30K 220V 60 DMX 40W HP

UniFlood C Pro - 2010 lm - 40 W - 3000 K

Philips UniFlood C Pro offers a unique rugged elegance, with a cylindrical form and flowing lines that connect the front and back housings beautifully. This is compact architectural floodlighting design where every element has a purpose; the front section provides exceptional lighting, while the back section houses all the electrical components. Between the two, the fins dissipate heat and also serve as a decorative element. Exterior-rated, Philips UniFlood C Pro is a cost-effective, architectural LED floodlight that is designed for façade, landscape and outdoor floodlighting applications. The robust mechanical design and high-efficiency optics make it ideal for illuminating multi-story exterior façades, bridges, landmarks and monuments. Architects and designers have the freedom to explore a wide range of concepts and designs with no limitations, thanks to a range of colors, multiple spread lenses and a DMX512/RDM control option.

Warnings and Safety

- For outdoor use only

Product data

| General information | |
|-------------------------|--|
| Light source color | 830 warm white |
| Driver included | Yes |
| Optical cover/lens type | Clear glass |
| Control interface | Dynamic DMX/RDM |
| Connection | Flying leads/wires and 2 Push-in connector 4-pole |
| Cable | Cable 0.5 m without plug 3-pole and 2 Cables 0.5 m with connector 4-pole |
| Protection class IEC | Safety class I |

| CE mark | CE mark |
|--------------------------|--------------|
| Operating and electrical | |
| Input Voltage | 220 to 240 V |
| Input Frequency | 50 to 60 Hz |
| Power Factor (Min) | 0.9 |
| Controls and dimming | |
| Dimmable | Yes |

UniFlood C Pro

Mechanical and housing

| | |
|-----------------------------|-------------------|
| Housing Material | Aluminum die cast |
| Optical cover/lens material | Polycarbonate |
| Color | Dark gray |

Approval and application

| | |
|------------------------------|---|
| Ingress protection code | IP66 [Dust penetration-protected, jet-proof] |
| Mech. impact protection code | IK06 [1 J] |

Initial performance (IEC compliant)

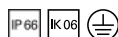
| | |
|-------------------------------------|---------|
| Initial luminous flux (system flux) | 2010 lm |
| Luminous flux tolerance | +/-10% |
| Initial LED luminaire efficacy | 50 lm/W |
| Init. Corr. Color Temperature | 3000 K |
| Init. Color Rendering Index | >80 |
| Initial input power | 40 W |
| Power consumption tolerance | +/-10% |

Application conditions

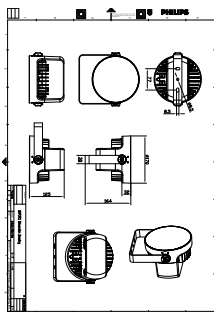
| | |
|---------------------------|---------------|
| Ambient temperature range | -40 to +50 °C |
|---------------------------|---------------|

Product data

| | |
|---------------------------------|-------------------------------------|
| Full product code | 872016950411099 |
| Order product name | BVP372 16LED 30K 220V 60 DMX 40W HP |
| EAN/UPC - Product | 8720169504110 |
| Order code | 911401774293 |
| Numerator - Quantity Per Pack | 1 |
| Numerator - Packs per outer box | 4 |
| Material Nr. (12NC) | 911401774293 |
| Net Weight (Piece) | 3.000 kg |



Dimensional drawing



BVP372 16LED 30K 220V 60 DMX 40W HP

