



UniFlood C Pro

BVP373 30LED RGB 220V 15 DMX 80W HP

UniFlood C Pro - 2810 lm - 80 W - -

Philips UniFlood C Pro offers a unique rugged elegance, with a cylindrical form and flowing lines that connect the front and back housings beautifully. This is compact architectural floodlighting design where every element has a purpose; the front section provides exceptional lighting, while the back section houses all the electrical components. Between the two, the fins dissipate heat and also serve as a decorative element. Exterior-rated, Philips UniFlood C Pro is a cost-effective, architectural LED floodlight that is designed for façade, landscape and outdoor floodlighting applications. The robust mechanical design and high-efficiency optics make it ideal for illuminating multi-story exterior façades, bridges, landmarks and monuments. Architects and designers have the freedom to explore a wide range of concepts and designs with no limitations, thanks to a range of colors, multiple spread lenses and a DMX512/RDM control option.

Warnings and Safety

- For outdoor use only

Product data

General information		CE mark	
Light source color	RGB	CE mark	
Driver included	Yes		
Optical cover/lens type	Clear glass		
Control interface	Dynamic DMX/RDM		
Connection	Flying leads/wires and 2 Push-in connector 4-pole		
Cable	Cable 0.5 m without plug 3-pole and 2 Cables 0.5 m with connector 4-pole		
Protection class IEC	Safety class I		
		Operating and electrical	
		Input Voltage	220 to 240 V
		Input Frequency	50 to 60 Hz
		Power Factor (Min)	0.9
		Controls and dimming	
		Dimmable	Yes

UniFlood C Pro

Mechanical and housing

Housing Material	Aluminum die cast
Optical cover/lens material	Polycarbonate
Color	Dark gray

Approval and application

Ingress protection code	IP66 [Dust penetration-protected, jet-proof]
Mech. impact protection code	IK06 [1 J]

Initial performance (IEC compliant)

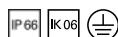
Initial luminous flux (system flux)	2810 lm
Luminous flux tolerance	+/-10%
Initial LED luminaire efficacy	35 lm/W
Init. Corr. Color Temperature	-
Init. Color Rendering Index	N.A.
Initial input power	80 W
Power consumption tolerance	+/-10%

Application conditions

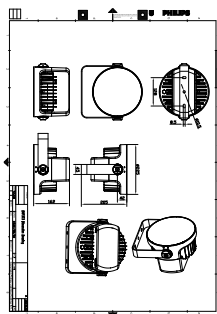
Ambient temperature range	-40 to +50 °C
---------------------------	---------------

Product data

Full product code	872016950508799
Order product name	BVP373 30LED RGB 220V 15 DMX 80W HP
EAN/UPC - Product	8720169505087
Order code	911401775263
Numerator - Quantity Per Pack	1
Numerator - Packs per outer box	2
Material Nr. (12NC)	911401775263
Net Weight (Piece)	6.000 kg



Dimensional drawing



BVP373 30LED RGB 220V 15 DMX 80W HP

