



# UniFlood C Pro

## BVP373 36LED 27K 220V 45 100W HP

UniFlood C Pro - 5480 lm - 100 W - 2700 K

Philips UniFlood C Pro offers a unique rugged elegance, with a cylindrical form and flowing lines that connect the front and back housings beautifully. This is compact architectural floodlighting design where every element has a purpose; the front section provides exceptional lighting, while the back section houses all the electrical components. Between the two, the fins dissipate heat and also serve as a decorative element. Exterior-rated, Philips UniFlood C Pro is a cost-effective, architectural LED floodlight that is designed for façade, landscape and outdoor floodlighting applications. The robust mechanical design and high-efficiency optics make it ideal for illuminating multi-story exterior façades, bridges, landmarks and monuments. Architects and designers have the freedom to explore a wide range of concepts and designs with no limitations, thanks to a range of colors, multiple spread lenses and a DMX512/RDM control option.

### Warnings and Safety

- For outdoor use only

### Product data

| General information     |                                 | Operating and electrical      |                   |
|-------------------------|---------------------------------|-------------------------------|-------------------|
| Light source color      | 827 warm white                  | Input Voltage                 | 220 to 240 V      |
| Driver included         | Yes                             | Input Frequency               | 50 to 60 Hz       |
| Optical cover/lens type | Clear glass                     | Power Factor (Min)            | 0.9               |
| Control interface       | -                               | <b>Controls and dimming</b>   |                   |
| Connection              | Flying leads/wires              | Dimmable                      | No                |
| Cable                   | Cable 0.5 m without plug 3-pole | <b>Mechanical and housing</b> |                   |
| Protection class IEC    | Safety class I                  | Housing Material              | Aluminum die cast |
| CE mark                 | CE mark                         |                               |                   |

# UniFlood C Pro

|                             |               |
|-----------------------------|---------------|
| Optical cover/lens material | Polycarbonate |
| Color                       | Dark gray     |

## Approval and application

|                              |   |
|------------------------------|---|
| Ingress protection code      | IP66 [ Dust penetration-protected, jet-proof] |
| Mech. impact protection code | IK06 [ 1 J]                                   |

## Initial performance (IEC compliant)

|                                     |         |
|-------------------------------------|---------|
| Initial luminous flux (system flux) | 5480 lm |
| Luminous flux tolerance             | +/-10%  |
| Initial LED luminaire efficacy      | 55 lm/W |
| Init. Corr. Color Temperature       | 2700 K  |
| Init. Color Rendering Index         | >80     |
| Initial input power                 | 100 W   |
| Power consumption tolerance         | +/-10%  |

## Application conditions

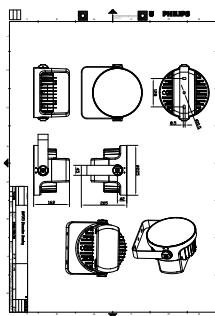
|                           |               |
|---------------------------|---------------|
| Ambient temperature range | -40 to +50 °C |
|---------------------------|---------------|

## Product data

|                                 |                                  |
|---------------------------------|----------------------------------|
| Full product code               | 872016950528599                  |
| Order product name              | BVP373 36LED 27K 220V 45 100W HP |
| EAN/UPC - Product               | 8720169505285                    |
| Order code                      | 911401775463                     |
| Numerator - Quantity Per Pack   | 1                                |
| Numerator - Packs per outer box | 2                                |
| Material Nr. (12NC)             | 911401775463                     |
| Net Weight (Piece)              | 6.000 kg                         |



## Dimensional drawing



BVP373 36LED 27K 220V 45 100W HP

