



GreenPerform Teardrop G3

CR388C G3 LED80/840 L150

GreenPerform Teardrop G3, 52 W, 840 neutral white, 8000 lm, Wide beam, IP40 | Wire-protected

Greenperform Teardrop CR388C G3 is an affordable but with high system efficacy cleanroom batten. By means of its slim and streamlined design, it perfectly reduces the dust collection on the housing. Thanks to its max 150lm/w system efficacy, it delivers higher energy saving for the customer. In addition, CR388C G3 provides easy connection for continuous installation. Dali interface and CRI90 are provided by this family to further extend the availability for control interface and visual comfort. CR388C G3 is a decent product for newly installed cleanroom and retrofit cleanroom projects as well.

Product data

General Information		Beam angle of light source	
Number of gear units	1 unit	Beam angle of light source	120 degree(s)
Gear	EB [Electronic]	Light source color	840 neutral white
Driver included	Yes	Optic type	Wide beam
Light source engine type	LED	Luminaire light beam spread	-
Warranty period	5 years	Unified glare rating CEN	Not applicable
Light Technical		Effective projected area	0.062 m ²
Luminous Flux	8,000 lm	Operating and Electrical	
Correlated Color Temperature (Nom)	4000 K	Input Voltage	220 to 240 V
Luminous Efficacy (rated) (Nom)	153 lm/W	Line Frequency	50 or 60 Hz
Color rendering index (CRI)	>80	Inrush current	14.7 A
Number of light sources	272	Inrush time	0.21 ms
		Power Consumption	52 W

GreenPerform Teardrop G3

Power Factor (Fraction)	0.95
Connection	Push-in connector 3-pole
Cable	- Cable 0.3 m without plug
Number of products on MCB of 16 A type B 22	
Suitable for random switching	Yes
Protection class IEC	Safety class I

Controls and Dimming

Dimmable	-
Control interface	-
Maximum dim level	Not applicable

Mechanical and Housing

Housing Material	Plastic
Reflector material	-
Optic material	Polycarbonate
Optical cover material	Polycarbonate
Housing Color	White RAL 9003
Mounting device	Wall-mounting bracket
Optical cover finish	Frosted
Overall length	1,394.5 mm
Overall width	44.5 mm
Overall height	62.5 mm
Dimensions (Height x Width x Depth)	63 x 45 x 1395 mm
Ingress protection code	IP40 [Wire-protected]
Mech. impact protection code	IK03 [0.3 J]
Optical cover type	Polycarbonate
Net Weight (Piece)	0.804 kg

Approval and Application

Glow-wire test	-
Flammability mark	-
CE mark	Yes
ENEC mark	-
Photobiological risk	Photobiological risk group 1 @200mm to EN62778
Photobiological risk specification	0 m
EU RoHS compliant	Yes
Performance ambient temperature Tq	25 °C
Ambient temperature range	0 to +35 °C

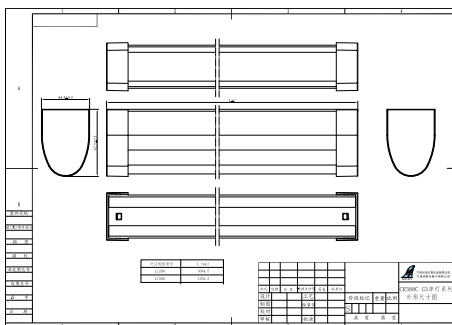
Initial Performance (IEC Compliant)

Luminous flux tolerance	+/-10%
Initial chromaticity	8000
Power consumption tolerance	+/-10%

Product Data

Order product name	CR388C G3 LED80/840 L150
Full product name	CR388C G3 LED80/840 L150
Order code	911401510344
Material Nr. (12NC)	911401510344
Numerator - Quantity Per Pack	1
Numerator - Packs per outer box	16

Dimensional drawing



GreenPerform Teardrop G3

