



# Greenspace Flex

## RS378B P24 930 PSU-E NB M70

Greenspace Flex, 24 W, 930 warm white, 18°, IP20 | Finger-protected

GreenSpace Flex is performance portfolio dedicated to Hospitality segment for GC/GM countries. With modular design concept, the light engines and different trims could have multiply of combination to satisfy diversified customer's requirement.

### Product data

General Information	
Number of gear units	1 unit
Driver included	Yes
Light source engine type	LED
Warranty period	3 years

Light Technical	
Luminous Flux	1,100 lm
Correlated Color Temperature (Nom)	3000 K
Luminous Efficacy (rated) (Nom)	100 lm/W
Color rendering index (CRI)	>90
Light source color	930 warm white
Luminaire light beam spread	18°

Operating and Electrical	
Input Voltage	220-240 V
Line Frequency	50 or 60 Hz
Average CLO power consumption	1905 W
Power Consumption	24 W
Power Factor (Fraction)	0.9

Connection	External connector
Cable	-
Number of products on MCB of 16 A type B	-
Suitable for random switching	No
Protection class IEC	Safety class II

Controls and Dimming	
Dimmable	No
Driver/power unit/transformer	Electronic transformer
Control interface	-
Constant light output	No
Maximum dim level	Not applicable

Mechanical and Housing	
Housing Material	Aluminum Alloy
Optic material	Polymethyl methacrylate
Optical cover material	Polymethyl methacrylate
Fixation material	Aluminum
Housing Color	Grey
Optical cover finish	Opal

# Greenspace Flex

Overall height	90 mm
Overall diameter	70 mm
Ingress protection code	IP20 [Finger-protected]
Mech. impact protection code	IK04 [0.5 J standard plus]
Optical cover type	PMMA
Net Weight (Piece)	0.470 kg

## Approval and Application

Glow-wire test	Temperature 600 °C, duration 30 s
CE mark	Yes
EU RoHS compliant	Yes
Ambient temperature range	-20 to +45 °C

## Initial Performance (IEC Compliant)

Luminous flux tolerance	-10% / +10%
Initial chromaticity	SDCM<3
Power consumption tolerance	+/-10%

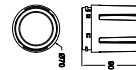
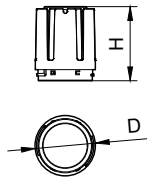
## Over Time Performance (IEC Compliant)

Median useful life L80B50	50.000 hour(s)
---------------------------	----------------

## Product Data

Order product name	RS378B P24 930 PSU-E NB M70
Full product name	RS378B P24 930 PSU-E NB M70
Full product code	692382865017999
Order code	911401721442
Material Nr. (12NC)	911401721442
Numerator - Quantity Per Pack	1
EAN/UPC - Product/Case	6923828650179
Numerator - Packs per outer box	36
EAN/UPC - Case	6923828652586

## Dimensional drawing



Modular Type	D, mm	H, mm
RS378B P6/P11 M55	55	49
RS378B P15 M55	55	49
RS378B P24 M70	70	90
RS378B P33 M87	87	107
RS378B P42 M102	102	116

